

Penshurst



Price **Module 7**

Frontal: Solid In-frame design/Veneered centre panel.

Standard Drawer: 500mm Silver powder coated drawer sides with full extension runners and Mfc base/back.

- Standard hinge system - Concealed clip hinges 100 deg. (fully cranked) 170 deg. hinge option (semi-cranked) with 9mm additional spacer plates.
- Optional hinge system (at extra charge) - Brass, Antique Pewter or chrome butt with ball catch.
- It is assumed that functional doors (operating in frame) require butt hinges only. However, if integral door and pull-out interior doors require false butt hinges fitted, please detail with preferred hand on kitchen elevation order.

Price	Door Colour/Ref	Carcase Options-Mfc	Suggested Plinth Style (Charged separately)	Handle Options	Handle Centre	Handle Alignment On Hinged Door	Jig Ref.
7	Light Oak (114)	Light Oak (4)	Light Oak Veneer (14)	211 Bulbous D	128	V	CKB
				408 Engraved D	128	V	CKB
				456 Cast Iron D	96	V	CKB
7	Wild Cherry #(501)	Milano Cherry(109)	Wild Cherry Veneer (53)	457 Rose Bud Pull	-	-	CKB
				466 Cast Iron Knob	-	-	CKB
7	Character Oak ~(500)	Light Oak (4)	Character Oak Veneer (50)	471 Allen Key D	128	V	CKB

Wild Cherry contains a variety of markings which include clusters of pin knots, and very small dark streaks of gum set. It is also accepted that sap is not a defect (NHLA grading rules). The photosensitivity of this species will darken the timber quite rapidly within the 3-6 month period after production.

~ Door and centre panels are manufactured from Character Oak selected specifically for random natural knots and shakes. Colour and character variation will be prominent on this range by design. It is also accepted that some minor secondary surface checking may occur on the oak after installation.

Carcase Option

- A. If alternative carcass colour is required, this must be clearly stated on the order and apply to complete kitchens only. Options are - Alabaster, White, Light Oak, Maple, Silver, Milano Cherry, Planked Walnut Mfc.
- B. Maple - We strongly recommend that exposed ends are specified as integral veneer style, these should be specified at extra charge. (Refer Section 7).



Light Oak In Frame 114



Wild Cherry In Frame 501

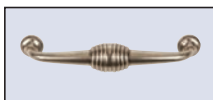


Character Oak In Frame 500



Glass Door.
Light Oak, Wild Cherry, Character Oak, Clear Glass.

Suggested Handle Choice



Bulbous D. 211



Engraved D. 408



Cast Iron D. 456



Rose Bud Pull. 457



Cast Iron Knob. 466



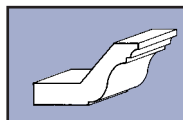
Allen Key D. 471

Premium Handles are available (see Section 0.42 and Section 8) and should be specified on order (extra charges apply per handle). Alternative standard handles are available. Please refer to Range/Standard handle availability chart (see Section 0.43 and Section 8).

Cornice

Model/Description	Colour (Ref.)
MLD011 Solid Oak Cornice	Light Oak (14)
	Wild Cherry (53)
	Character Oak (50)

*Alternative styles available (refer Section 6)

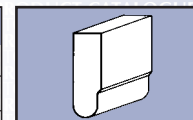


MLD 011

Pelmet Trim

Model/Description	Colour (Ref.)
MLD052 Veneer Pelmet Trim	Light Oak (14)
	Wild Cherry (53)
	Character Oak (50)

*Alternative styles available (refer Section 6)



MLD 052